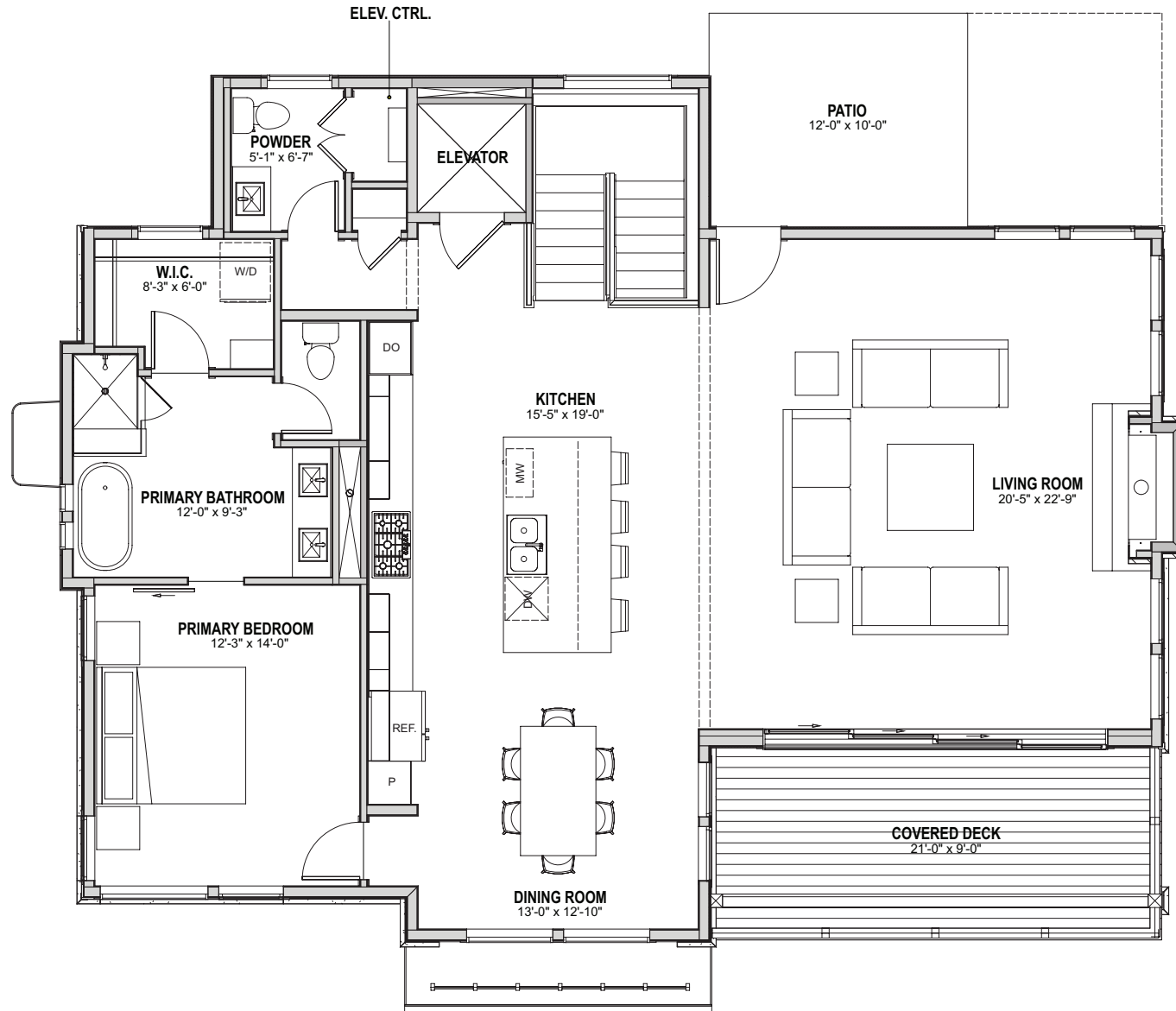




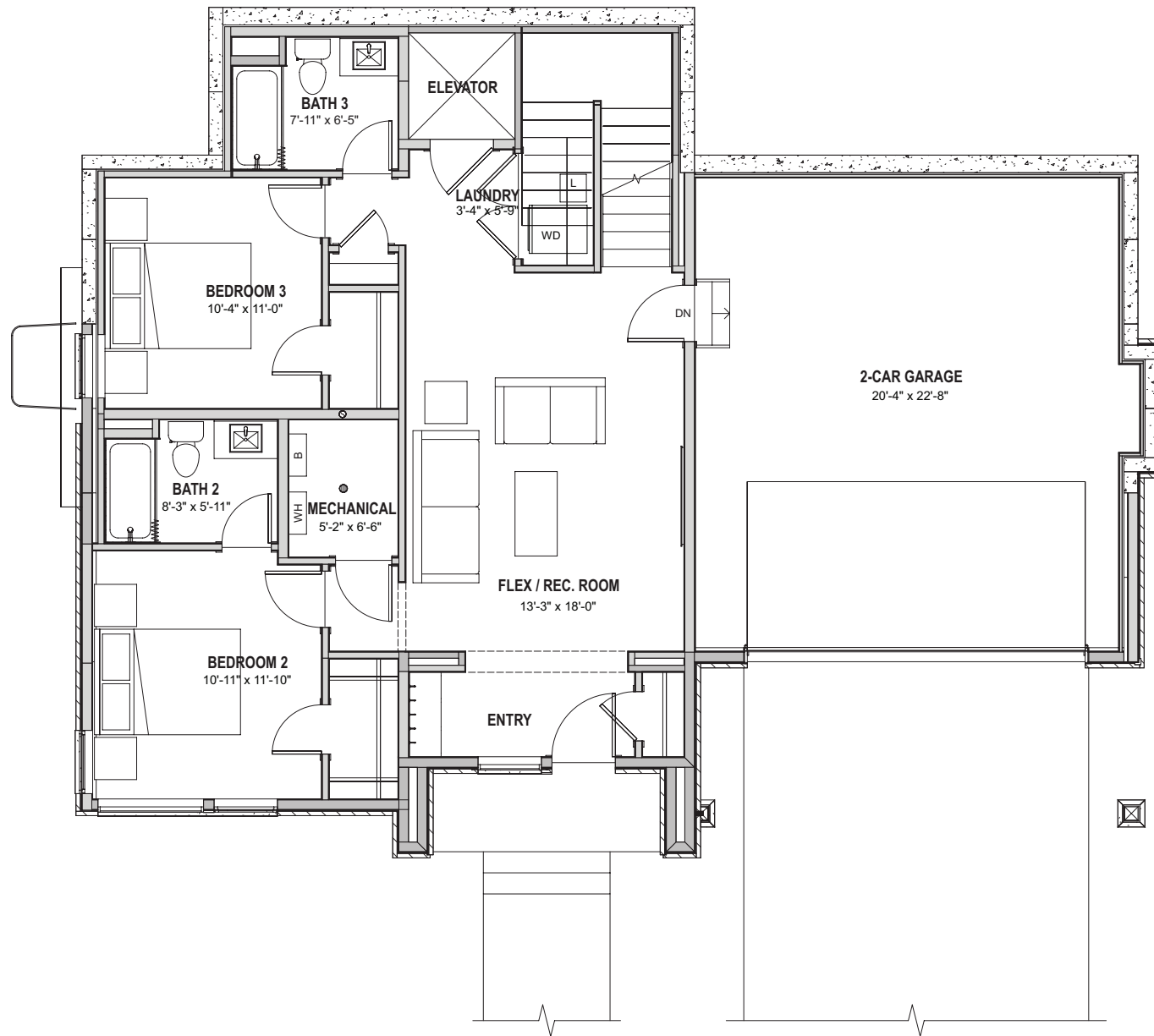
## Uphill Style Plan

- 2,404 Square Feet
- 3 Bedroom + Flex Space
- 3.5 Baths
- Main Level Owners Suite
- Elevator Included
- 2-Car Attached Garage





**Main Level**  
1,480 Square Feet



**Lower Level**  
924 Square Feet

All renderings and plans are artist's conceptions and subject to change without notice. All measurements, locations and features shown are approximate and may vary. All prices, features and materials are subject to change and availability. Equal housing opportunity. Each site is subject to specific site conditions. If applicable, foundation design, exterior finishing and materials, grading/drainage and commensurate retaining walls, decks/patios and supporting columns, and other items - may all vary from site to site. Consult your sales team for the specific conditions for your site. 11.1.2024



## The Mountain Bluebird

Mountain Bluebirds lend a bit of cerulean sparkle to western mountain landscapes. You may spot these cavity-nesters flitting between perches in mountain meadows, in burned or cut-over areas, or where prairie meets forest – especially in places where people have provided nest boxes. Particularly at higher elevations, you can often find them along rural roads on such perches. In forested areas, look for them in large openings, particularly if there are aspen in the vicinity (aspen is a key cavity-providing tree in western montane forests). In winter, search for areas with berry-laden junipers and watch for flocks of birds feeding on those berries. Mountain Bluebirds often mix with Western Bluebirds, American Robins, and Cedar Waxwings when taking advantage of such fruity abundance.

